

**World Headquarters/ North America:**

Hypercom Corporation  
2851 W. Kathleen Road, Phoenix, Arizona 85053, USA • Tel: +1.602.504.5000 • Fax: +1.602.504.4655

**HYC Latin America:**

Hypercom Industria e Comercio LTDA  
Centro Empresarial Atibaia  
Rodovia Dom Pedro 1, KM 07, 5 Av.  
Tegula, 888-Ponte Alta  
Atibaia 12940-000, Brazil

Tel: +55.11.4417.7000  
Fax: +55.11.4417.7060

**HYC EMEA:**

Hypercom EMEA  
Unit 2, Woking Eight  
Forsyth Road  
Woking, GU21 5SB,  
United Kingdom

Tel: +44.1483.718600  
Fax: +44.1483.718601

**HYC Asia:**

Hypercom Asia  
21/F Metro Centre II  
21 Lam Hing Street  
Kowloon Bay, Kowloon  
Hong Kong

Tel: +85.2.2561.6800  
Fax: +85.2.2561.5890

**HYC Australia:**

Hypercom Australia  
Unit 1,  
11 Orion Road  
Lane Cove, NSW 2066  
Australia

Tel: +612.9420.6444  
Fax: +612.9420.6466

©2004 Hypercom Corporation, all rights reserved. Hypercom and the Hypercom logo are registered trademarks of Hypercom Corporation. Optimum is a trademark of Hypercom Corporation. All other products or services mentioned in this document are trademarks, service marks, registered trademarks or registered service marks of their respective owners.

Celebrating 26 years of technology excellence, innovation and leadership, Hypercom Corporation is a leading global provider of electronic payment solutions that add value at the point-of-transaction for consumers, merchants and acquirers, and yield increased profitability for its customers. Widely recognized as the global payment technology innovator, Hypercom delivers comprehensive card payment terminal, network and server solutions that help merchants and financial institutions generate revenues and increase profits.

Headquartered in Phoenix, Arizona, Hypercom's card payment terminal, network and server solutions are leading the transformation of electronic payments in more than 100 countries.

**COMPLIANCE:**

- FCC Part 15 (ICES-003)
- FCC Part 68 (CS-03)
- CTR21
- EN55022
- EN55024
- EN60950
- CISPR 22
- AS/NZS 3260
- AS/NZS 3548

940435-002, Rev. A

09/04



www.hypercom.com

# Terminal Installation Guide



www.hypercom.com



# Optimum T4100 Installation Guide

## Equipment Check List →

### WARNING:

- Do not disassemble the AC adapter. Only qualified technicians should service the adapter.
- The AC adapter was designed for indoor use only; do not expose to rain or snow.
- Do not immerse in fluid.



Optimum T4100



AC Adapter



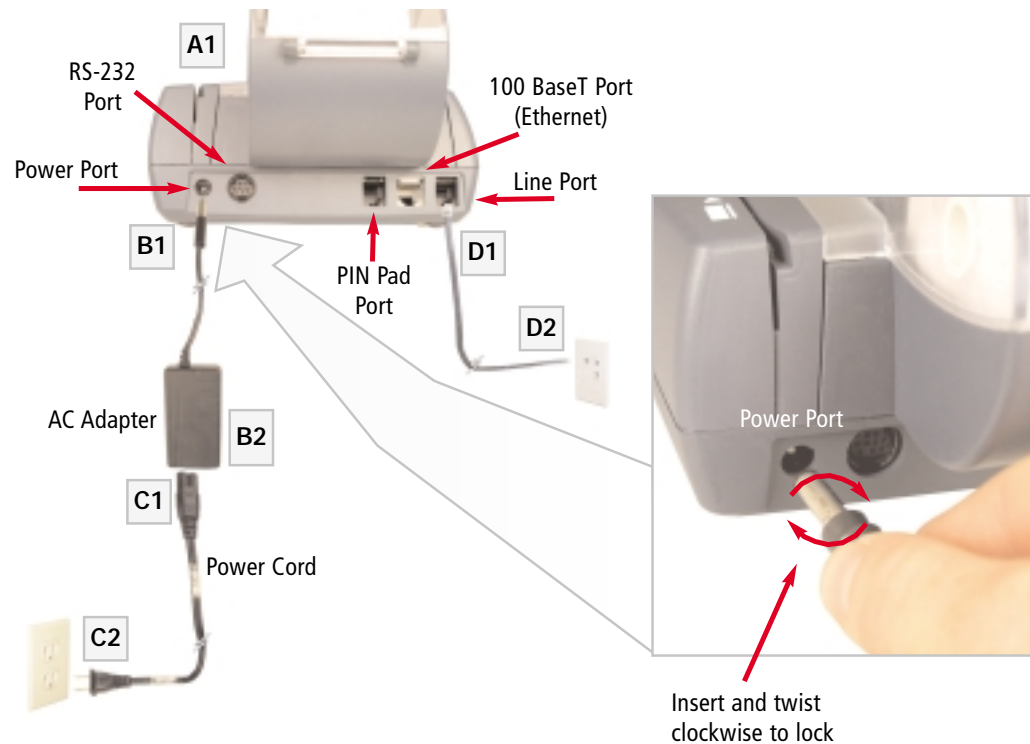
Power Cord



Telephone Cable

Paper Roll

## Power and Telephone Line Connection



## Paper Roll Installation

